



INTRODUCTION TO FAITALPRO

BRIEF HISTORY OF FAITAL



THE FAITAL GROUP



Faital S.p.A.

World Headquarters - R&D / Sales

San Donato Milanese, ITALY



Faital S.p.A.

Manufacturing Plant

Chieve, ITALY

MHG Kft.

Magyarországi Hangszórógyártó Kft.
Manufacturing Plant

Salgótarján, HUNGARY

FAITAL USA, Inc.

Sales / Logistic Center

Pompton Plains, NJ - U.S.A.

SOME OF OUR CUSTOMERS

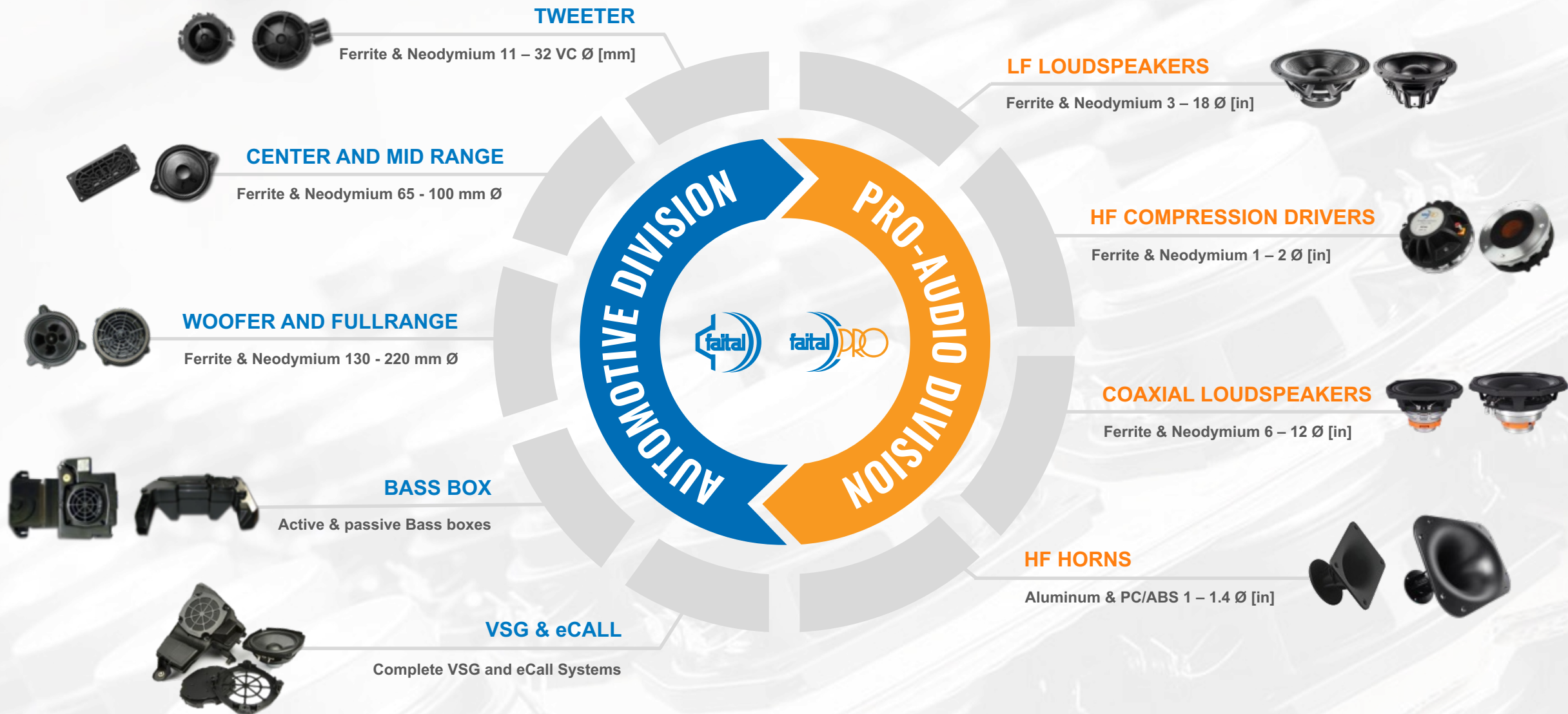
Automotive Customers



PRO Audio Customers



COUNTINUOUS TECHNOLOGY TRANSFER



CREATION OF A FAITALPRO LOUDSPEAKER

Creating a loudspeaker system involves a combination of design, technology and sensory considerations.



**PRODUCT
CONCEPTION**



**PRODUCT
DESIGN**



**PROTOTYPING &
TESTING**



**PRE-SERIES
PRODUCTION**



**VALIDATION
TESTING**



**MASS
PRODUCTION**



PRODUCT CONCEPTION

- Based on market research product features are defined
- Product development team is nominated
- Initial project planning

PRODUCT DESIGN

- Specific components are designed and modeled using specific software (Autocad, Catia, NX)
- Based on required physical and dimensional parameters, **electro-acoustic simulations** are carried out using Finite Element Analysis (FEA) software
- The results of the simulations allow the R&D team to **predict the performance** of the product





PROTOTYPING AND TESTING

- The first physical sample is created using rapid **prototyping techniques**
- This prototype is measured to verify that all electrical and acoustical parameters comply with the initial design specification
- **Sound is evaluated by tests** using instruments and a **series of listening sessions** are carried out by a specific team of highly qualified engineers
- Industrial manufacturing aspects are assessed providing an initial outline of the production flow and work can start on the production tools and equipment for the final product



PRE-SERIES PRODUCTION

- When the development team is satisfied, a pre-series production build is carried out using definitive tooling and production process
- The plant committee and the R&D dept. use this phase to verify the acoustical performance of the definitive product as well as the production process

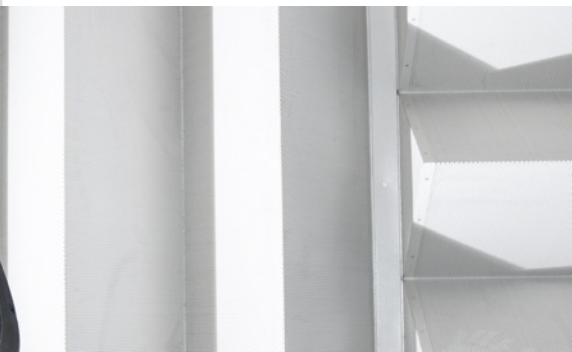
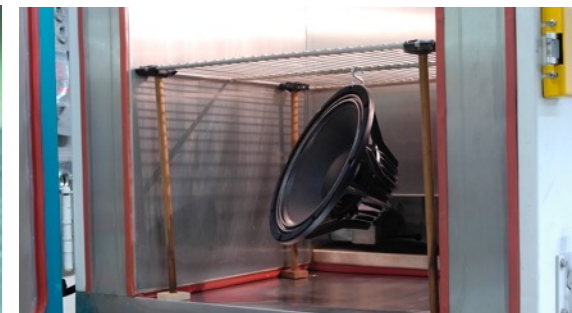
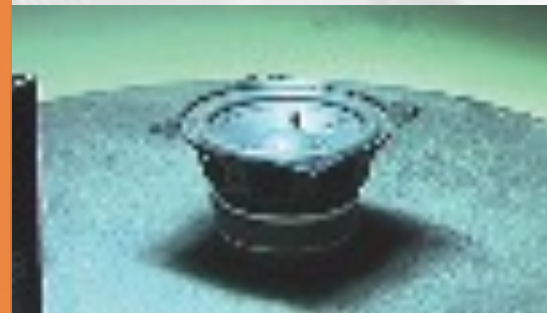
VALIDATION TESTING

Faital's R&D department uses the pre-series loudspeakers to carry out a **series of tests simulating conditions the product will be subjected to.**

These tests include:

- Salt fog test
- Life test
- Temperature shock test
- Humidity test
- UV Exposure test
- Vibration test

Once these tests are concluded successfully the **product can be considered validated and ready for mass production.**



MASS PRODUCTION

All loudspeakers manufactured by the Faital group are fully checked at the end of the assembly line. Loudspeakers are tested individually also using proprietary computerized equipment, which verifies in real time six electro-acoustic parameters relating to nominal use conditions specific to each product.

PRODUCTION MANUFACTURING INSTALLATION

- 2 Automotive tweeter production lines
- 6 Automotive woofer production lines, up to 12" speakers
- 1 Automotive bass box assembly line
- 1 PRO-Audio compression driver assembly line
- 1 PRO-Audio woofer production line up to 18" speakers



620

Total Group Employees (incl. HQ)



565

Total Factory Employees in all plants



530

Total Group Blue Collar Employees



Thank you for your time

FIND OUT MORE ON FAITALPRO.COM

